

Piano

La vie est belle

$\text{♩} = 128$

2

7

11

15

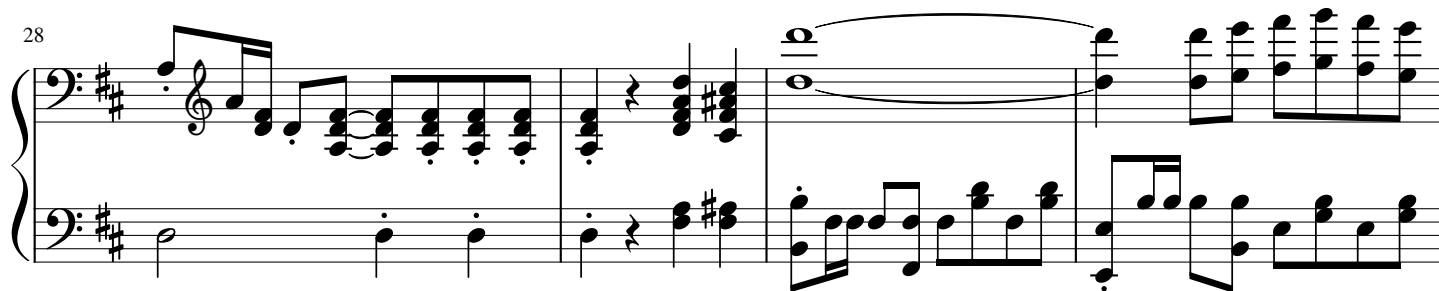
21

This piano score for 'La vie est belle' is written in D major (two sharps) and 4/4 time. The tempo is marked as 128 beats per minute. The score is divided into five systems, each with a measure number (2, 7, 11, 15, 21) at the beginning. The first system (measures 2-6) features a treble staff with a half-note chord and a bass staff with a half-note chord. The second system (measures 7-10) continues the melody in the treble staff and the bass line in the bass staff. The third system (measures 11-14) shows a more complex melody in the treble staff with some grace notes, while the bass staff continues with a steady bass line. The fourth system (measures 15-20) features a treble staff with a half-note chord and a bass staff with a half-note chord. The fifth system (measures 21-24) shows a treble staff with a half-note chord and a bass staff with a half-note chord.

25



28



32



36



40



44



50

System 50: Treble and bass staves in D major. Treble staff features a melodic line with eighth and sixteenth notes, including a triplet. Bass staff provides a steady eighth-note accompaniment.

57

System 57: Treble staff continues the melodic line with some rests. Bass staff maintains the eighth-note accompaniment.

61

System 61: Treble staff has a whole rest followed by a melodic phrase. Bass staff has a whole rest followed by a melodic phrase. A double bar line with repeat dots is present.

63

System 63: Treble staff features a melodic line with eighth notes. Bass staff has a steady eighth-note accompaniment.

66

System 66: Treble staff continues the melodic line. Bass staff has a steady eighth-note accompaniment.

69

System 69: Treble staff features a melodic line with eighth notes and a long horizontal line above the staff. Bass staff has a steady eighth-note accompaniment.

73

Measures 73-76 of a musical score in D major. Measure 73 features a treble staff with a series of eighth-note chords and a bass staff with a walking bass line. Measure 74 continues the treble staff's pattern with a dotted quarter note and eighth notes, while the bass staff has a similar walking bass line. Measure 75 shows the treble staff with a more complex chordal structure and the bass staff with a walking bass line. Measure 76 concludes the system with a treble staff ending in a sixteenth-note scale and a bass staff with a final chord.

77

Measures 77-80 of a musical score in D major. Measures 77 and 78 feature a treble staff with a series of eighth-note chords and a bass staff with a walking bass line. Measures 79 and 80 continue this pattern, with the treble staff showing a consistent eighth-note chordal structure and the bass staff maintaining a steady walking bass line.

81

Measures 81-84 of a musical score in D major. Measures 81 and 82 feature a treble staff with a series of eighth-note chords and a bass staff with a walking bass line. Measures 83 and 84 continue this pattern, with the treble staff showing a consistent eighth-note chordal structure and the bass staff maintaining a steady walking bass line.

85

Measures 85-87 of a musical score in D major. Measures 85 and 86 feature a treble staff with a series of eighth-note chords and a bass staff with a walking bass line. Measure 87 concludes the system with a treble staff ending in a final chord and a bass staff with a final chord.